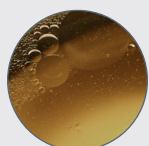


neurotouch symmetry serum

facial sculpting skin care,
elevated by neuroscience

visibly restores facial symmetry
for a more sculpted appearance



**biomimetic botanical blend
+ bioengineered
bacillus ferment**

visibly sculpts + lifts skin to restore
facial symmetry

aromachology blend

uplifts mood



squalane + bionutrient oils

strengthens skin's moisture barrier

how to use:

Use daily. Shake well. Apply 4-6 drops onto
clean skin, massaging in firm upward strokes.
Keep out of eyes. Pair with the NeuroTouch
sculpting technique, alone or with a partner.

dermalogica



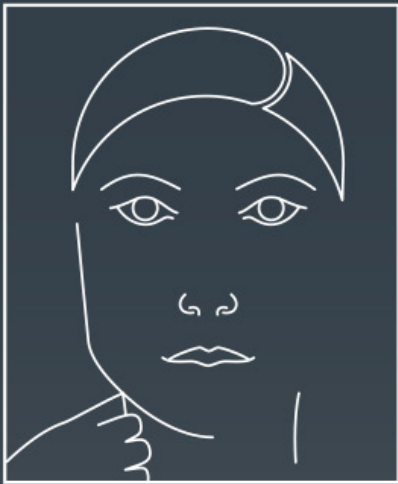


Use alone or with a partner
for more human connection



1. Shake well.
2. Apply **4-6 drops** into hands and take **3 deep breaths**, enjoying the **aromachology blend** to uplift mood.
3. **Apply to clean skin** after toner and before moisturizer.
4. Follow NeuroTouch sculpting technique.

neurotouch sculpting technique
we recommend performing each step 3X



neck

pinch ear → clavicle



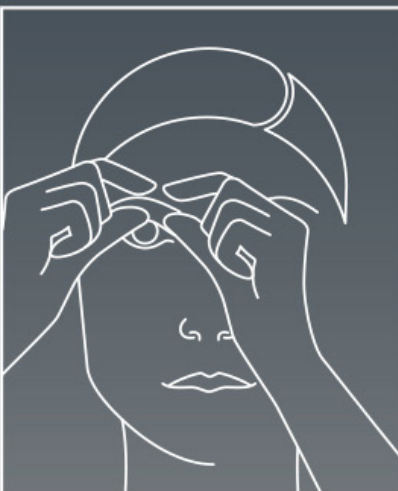
jaw

pinch chin → ear



cheeks

walk up/down
cheekbone



brows

pinch, lift + circle
eyebrow



forehead

lift + slide across
eyebrow



finish

massage
center/outward